



maidrite®

SUPERIOR PORTIONED MEATS SINCE 1960

Foodservice Product List



We offer **CUSTOM MANUFACTURING TO SPECIFICATION** Contact us for details

MAID-RITE SPECIALTY FOODS INC. 800.233.4259



SALES@MR-SPECIALTY.COM



RAW BURGERS



Product Description	Pack/Size	Case Weight (lb.)	Code Number
STEAMTOWN® ANGUS BURGERS			
Homestyle, Angus Burger	40/4 oz.	10	70804-25501
	30/5.33 oz.	10	70804-25502
	20/8 oz.	10	70804-25504
	28/6 oz.	10.5	70804-25506
SUPREME STEAMTOWN® PATTIES			
Homestyle	50/3.2 oz.	10	70804-25801
	30/5.33 oz.	10	70804-25902
Round	80/2 oz.	10	70804-25802
	40/4 oz.	10	70804-25903
PREMIER STEAMTOWN® PATTIES			
Whopper, All Beef Pattie 80/20	40/4 oz.	10	70804-26104
Round, All Beef Pattie	40/4 oz.	10	70804-26102
	28/6 oz.	10.5	70804-26108
	20/8 oz.	10	70804-26111
	80/2 oz.	10	70804-26181
Homestyle, All Beef Pattie	60/2.66 oz.	10	70804-28802
	50/3.2 oz.	10	70804-28803
	40/4 oz.	10	70804-28804
	30/5.33 oz.	10	70804-28805
	28/6 oz.	10.5	70804-28806
	20/8 oz.	10	70804-28808
ORIGINAL STEAMTOWN® PATTIES			
Round, All Beef Pattie 75/25	80/2 oz.	10	70804-26300
	40/4 oz.	10	70804-26303
Homestyle, All Beef Pattie 75/25	30/5.33 oz.	10	70804-26306
	60/2.66 oz.	10	70804-26311
	50/3.2 oz.	10	70804-26312
Whopper, All Beef Pattie 75/25	40/4 oz.	10	70804-26313
ORIGINAL BIG-N-BEEFY			
Homestyle, seasoned and marinated for optimal performance and holding	40/4 oz.	10	70804-35001
	30/5.33 oz.	10	70804-35002
	20/8 oz.	10	70804-35003
	50/3.2 oz.	10	70804-35005
*Premier Big-N-Beefy 80/20 also available.			



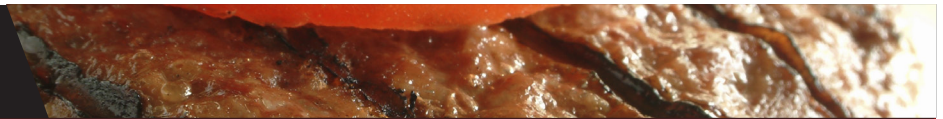
RAW BURGERS



Product Description	Pack/Size	Case Weight (lb.)	Code Number
VALUE BEEF PATTIES W/SOY			
Round, soy added	40/4 oz.	10	70804-36601
	30/5.33 oz.	10	70804-36604
	60/2.66 oz.	10	70804-36609
	50/3.2 oz.	10	70804-36611
BULK GROUND BEEF			
All Beef Pattie Chubs 80/20	4/5 lb.	10	70804-25400
Ground Beef Pattie Bars 80/20	15/1 lb.	15	70804-26021
Ground Beef Pattie Bars w/soy	15/1 lb.	15	70804-36614



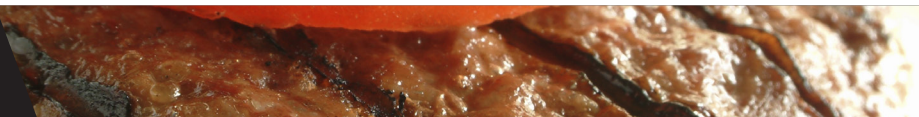
FULLY COOKED BURGERS



Product Description	Case Pack	Case Weight (lb.)	Code Number
CHARBROILED ALL BEEF PATTIE SEASONED			
Claw	48/4 oz.	12	75156-26012
Homestyle	48/4 oz.	12	75156-26044
	30/6 oz.	11.25	75156-26066
CHARBROILED BEEF PATTIE W/SOY			
Homestyle	320/1.5 oz.	30	75156-36615
	70/2.8 oz.	12.25	48339-36602
	64/3 oz.	12	75156-36310 LS
	48/4 oz.	12	75156-36410
	160/3 oz.	30	75156-36603
CHARBROILED ANGUS BEEF PATTIE			
Claw	48/4 oz.	12	75156-25504
CHARBROILED BEEF BURGER - CN			
Round	240/2 oz.	30	75156-03320
	192/2.5 oz.	30	75156-03322
	160/3 oz.	30	75156-03330



FULLY COOKED BURGERS



Product Description	Pack/Size	Case Weight (lb.)	Code Number
CHARBROILED LITTLE ANDIE BEEF SLIDER PATTIE W/SOY - CN			
Round	384/1.25 oz.	30	75156-03421
CHARBROILED BEEF PATTIE W/SOY - CN			
Round	192/2.5 oz.	30	75156-03425
CHARBROILED LOWER SODIUM BEEF PATTIE W/SOY - CN			
Homestyle	274/1.75 oz.	30	75156-03426
	213/2.25 oz.	30	75156-03427
	160/3 oz.	30	75156-03429



MEATBALLS



Product Description	Pack/Size	Case Weight (lb.)	Code Number
PORTOFINO MEATBALL			
A Pork & Beef meatball with a perfect blend of Italian spices, fresh garlic, Parmesan, Romano and Ricotta cheeses, soy free, fully cooked	320/.50 oz.	10	73119-14301
	160/1 oz.	10	73119-14302
	107/1.50 oz.	10	73119-14303
	80/2 oz.	10	73119-14304
ITALIAN MEATBALL WITH CHEESE			
A Beef meatball seasoned with a special blend including Italian seasonings, garlic, Romano cheese and parsley	320/.50 oz.	10	73119-12101
	160/1 oz.	10	73119-12102
	80/2 oz.	10	73119-12104
BIG CITY MEATBALL			
A Beef meatball for a wide variety of menu applications.	320/.50 oz.	10	73119-12301
	160/1 oz.	10	73119-12302
	107/1.50 oz.	10	73119-12303
	80/2 oz.	10	73119-12304

*Meatball counts are approximate. All Meatballs are fully cooked.



MEATBALLS CONTINUED



Product Description	Pack/Size	Case Weight (lb.)	Code Number
WEDDING SOUP MEATBALL/CHUNKY STYLE TOPPING			
A Chicken & Beef meatball for traditional “wedding soup”, meatball pizza topping or calzones	1280/.125 oz.	10	73119-11106
A Beef meatball with cheese for “wedding soup”, pizza topping or calzones	1280/.125 oz.	10	73119-12111
ITALIAN STYLE ALL PURPOSE MEATBALL			
A very mild Chicken & Beef meatball which will take on the flavor profile of the sauce in which it is prepared.	320/.50 oz.	10	73119-10501
	160/1 oz.	10	73119-10502
SCHOOL PROGRAMS			
A Beef meatball, Gluten Free, Soy Free	888/.54 oz.	30	73119-12931
A Beef meatball for a variety of menu applications - CN	960/.50 oz.	30	75156-04105
A Beef meatball. Gluten, Soy, Caramel Color, Sugar and Trans Fat Free - CN	711/.675 oz.	30	75156-04675
Deluxe Italian meatball	160/1 oz.	10	73119-10302
Chicken meatball, Gluten Free, Soy Free	888/.54 oz.	30	73119-15654

*Meatball counts are approximate. All Meatballs are fully cooked.



PHILLY STEAKS



Product Description	Pack/Size	Case Weight (lb.)	Code Number
THE ULTIMATE • BEEF PHILLY STEAK - FLAT			
The ultimate Philly steak, sliced from non-marinated whole muscle beef knuckle (sirloin tip).	40/4 oz.	10	75156-11554
	50/3.2 oz.	10	75156-11555
	80/2 oz.	10	75156-11557
BEN FRANKLIN - BEEF PHILLY STEAK - FLAT			
Made from chunked solid muscle meat incorporating beef knuckle (sirloin tip) and marinated for a robust flavor	40/4 oz.	10	75156-17674
	32/5 oz.	10	75156-17675
	2/5 lb. Bulk	10	75156-17699
LIBERTY BELL - BEEF PHILLY STEAK - FLAT			
Made from chunked solid muscle meat incorporating beef knuckle (sirloin tip) with less marination for a more natural Beef flavor	40/4 oz.	10	75156-17202



PHILLY STEAKS



Product Description	Pack/Size	Case Weight (lb.)	Code Number
E-Z BEEF™ PHILLY STEAK - BREAK-A-PART			
Break-A-Part style Philly steak made from solid muscle meat incorporating beef knuckle (sirloin tip) marinated for a robust flavor.	56/3 oz.	10.5	70804-16103
	40/4 oz.	10	70804-16104
	32/5 oz.	10	70804-16105
	28/6 oz.	10.5	70804-16106
	2/5 lb. Bulk	10	70804-16199
BEEF SIR STEAK® PHILLY STEAK - BREAK-A-PART			
Lower marinated Break-A-Part style Philly steak made from 100% trimmed porterhouse loin tail	40/4 oz.	10	70804-16901
	32/5 oz.	10	70804-16903
	28/6 oz.	10.5	70804-16902
100% ALL BEEF SANDWICH STEAK - VALUE - FLAT			
Lean, chopped, formed and sliced Beef sandwich steak	80/2 oz.	10	75156-17710
	56/3 oz.	10.5	75156-17700
100% ALL BEEF SANDWICH STEAK - VALUE - FLAT			
Chopped, formed and sliced Beef sandwich steak	80/2 oz.	10	75156-17000
	64/2.5 oz.	10	75156-17001
	56/3 oz.	10.5	75156-17002
BEEF SANDWICH SLICE - VALUE - FLAT			
Chopped, formed and sliced beef with soy protein sandwich slice	64/2.5 oz.	10	75156-17902
	56/3 oz.	10.5	75156-17901



BREAKFAST SAUSAGE



Product Description	Pack/Size	Case Weight (lb.)	Code Number
PORK			
Sausage Link, Skinless	160/1 oz.	10	75156-70511
Sausage Pattie	160/1 oz.	10	75156-70001
Big City Sausage Pattie	80/2 oz.	10	75156-72302
TURKEY			
Sausage Pattie - CN	128/1.25 oz.	10	75156-00513
Sausage Link - Skinless - CN	238/.67 oz.	10	75156-00567
BEEF			
Sausage Pattie - Wide (3" diameter - perfect for bagels, biscuits or croissants)	100/1.6 oz.	10	75156-32302



ITALIAN SAUSAGE



Product Description	Pack/Size	Case Weight (lb.)	Code Number
BEEF			
Italian Sausage Link - Skinless - CN	400/1.2 oz.	30	75156-05200



RIB TICKLERS



Product Description	Pack/Size	Case Weight (lb.)	Code Number
BEEF			
RIB TICKLER® BBQ BEEF RIBETTE - Cooked Boneless, select BEEF cuts, soy added, exclusive blend of BBQ seasonings, rib shape	75/3.2 oz.	15	75156-32003
BEEF RIB TICKLER®, CHARBROILED - Boneless BEEF rib-shaped pattie is a delicious option for center-of-the-plate entrée or a sandwich drizzled in your favorite sauce	160/3 oz.	30	75156-36033
RIB TICKLER® BBQ BEEF RIBETTE - Ready To Cook Boneless, select BEEF cuts, soy added, exclusive blend of BBQ seasonings, rib shape	40/4 oz.	10	70804-32001
PORK			
RIB TICKLER® BBQ PORK RIBETTE - Cooked Boneless, select PORK cuts, soy added, exclusive blend of BBQ seasonings, rib shape	75/3.2 oz.	15	75156-79003
RIB TICKLER® BBQ PORK RIBETTE WITH SAUCE - Cooked Boneless, select PORK cuts, soy added, exclusive blend of BBQ seasoning and sauce, rib shape	48/3.5 oz.	10.5	75156-79035
RIB TICKLER® BBQ PORK RIBETTE - Ready To Cook Boneless, select PORK cuts, with an exclusive blend of BBQ seasoning, rib shape	40/4 oz.	10	70804-79001
CHICKEN			
RIB TICKLER® BBQ CHICKEN RIBETTE - Fully cooked, Boneless Chicken BBQ seasoned, rib shape	64/3 oz.	12	75156-50123
SCHOOL ITEMS			
RIB TICKLER® BBQ SEASONED BEEF RIBETTE - CN	208/2.4 oz.	31.2	75156-05124



**READY TO COOK AND FULLY COOKED
SPECIALTY ITEMS CONTINUED**



Product Description	Case Pack	Case Weight (lb.)	Code Number
BEEF - ASSORTED SELECTIONS			
CHICKEN FRIED BEEF STEAK Pure Beef, Western style, ovenable, country style breading, homestyle shape	40/4 oz.	10	70804-21900
	30/5.33 oz.	10	70804-21901
CUBED BEEF STEAK - OVAL Pure beef, sliced, chopped, oval shape	40/4 oz.	10	70804-22202
CUBED BEEF STEAK - HOMESTYLE Pure Beef, sliced, chopped homestyle shape	40/4 oz.	10	70804-22301
	28/6 oz.	10.5	70804-22303
BEEF WELLINGTON French puff pastry wrapped around chopped and seasoned beef steak	40/4 oz.	10	70804-44501
	32/5 oz.	10	70804-44500
BREADED CHUCKWAGON PATTIE Beef, Chicken, soy concentrate, regular breading, oval shape	40/4 oz.	10	70804-46701
NEW YORK STRIP STEAKETTE, CHARBROILED A tender, fully cooked NY Strip shaped beef pattie for an upscale meal experience	160/3 oz.	30	75156-10930
LIVER			
PREMIUM BEEF LIVER Steer Liver, skinned and deveined, uniform portion	56/3 oz.	10.5	70804-19000
	28/6 oz.	10.5	70804-19004
PREMIUM BEEF LIVER - VAC PACK Select Liver, skinned and deveined, uniform portions, vacuum packed	28/6 oz.	10.5	70804-19007
	40/4 oz.	10	70804-19306
CALVES LIVER Skinned and deveined, uniform portions	40/4 oz.	10	70804-19401
	28/6 oz.	10.5	70804-19403
CALVES LIVER - VAC PACK Skinned and deveined, uniform portions, vacuum packed	40/4 oz.	10	70804-19404
MEATLOAF			
MEATLOAF SLICE, fully cooked	75/3.2 oz.	15	75156-19732
MEATLOAF SLICE - CN - 2.00 oz. M/MA, fully cooked	160/2.6 oz.	26	75156-03726
MEATLOAF SLICE, fully cooked	53/3 oz.	10	75156-19713
MEATLOAF SLICE WITH PEPPERS & ONIONS, fully cooked	160/3 oz.	30	75156-19730
TURKEY MEATLOAF SLICE - 2.00 oz. Equivalent M/MA, fully cooked	61/2.6 oz.	10	75156-19526
TURKEY MEATLOAF SLICE, fully cooked	32/5 oz.	10	75156-19515
MEATLOAF Ready to cook in an ovenable box	4/6 lb.	24	70804-19796



**READY TO COOK AND FULLY COOKED
SPECIALTY ITEMS CONTINUED**



Product Description	Case Pack	Case Weight (lb.)	Code Number
PORK - MISCELLANEOUS			
PORK CHOPETTE, OVEN BAKED A tender and fully cooked chop shaped pork chopette. Deliciously seasoned to perfection.	160/3 oz.	30	75156-73730
SALISBURY STEAK			
SALISBURY STEAK WITH BEEF AND CHICKEN Beef and Chicken, soy added, unique seasonings with whole eggs, fully cooked	84/4 oz.	21	75156-44704
SALISBURY STEAK, LOWER SODIUM, CHARBROILED Beef, soy added, seasoned and lower in sodium, fully cooked	53/3 oz.	10	75156-44913
	40/4 oz.	10	75156-44914
SALISBURY STEAK WITH PEPPERS, CHARBROILED Beef, fully cooked & charbroiled with Red and Green Bell Peppers	80/3 oz.	15	75156-44935
SALISBURY STEAK Seasoned beef pattie with soy added, chopped onions, bread crumbs and whole eggs	40/4 oz.	10	70804-44800
	56/3 oz.	10.5	70804-44803
SALISBURY STEAK Pure Beef, with chopped onions, seasoned bread crumbs and whole eggs	40/4 oz.	10	70804-44902
	30/5.33 oz.	10	70804-44904
	28/6 oz.	10.5	70804-44906
VEAL			
VEAL ROULADE Stuffed Veal Roll. Cubed Veal Steak, beef added, cornmeal stuffing	48/4 oz.	12	70804-61810
CUBED VEAL STEAK Veal with Beef added, chopped, cubed, shaped	40/4 oz.	10	70804-62303
CUBED VEAL AND BEEF PATTIES Seasoned, soy concentrate	40/4 oz.	10	70804-62601
CUBED VEAL AND BEEF PATTIE - EC Seasoned, soy concentrate	40/4 oz.	10	70804-62702
BREADED VEAL STEAK Veal with Beef added, regular breading	40/4 oz.	10	70804-63202
	30/5.33 oz.	10	70804-63204
BREADED VEAL STEAK Pure Veal, regular reading	40/4 oz.	10	70804-63402
BREADED VEAL AND BEEF PATTIE - EC Soy concentrate, regular breading	40/4 oz.	10	70804-63703
	30/5.33 oz.	10	70804-63705
ITALIAN BREADED VEAL AND BEEF PATTIE - EC Special Italian seasoned breading, soy concentrate	40/4 oz.	10	70804-64702



**READY TO COOK AND FULLY COOKED
SPECIALTY ITEMS CONTINUED**



Product Description	Case Pack	Case Weight (lb.)	Code Number
VEAL			
VEAL McCOY™ Natural shaped Italian breaded Veal Steak, 100% natural pure Veal slices.	40/4 oz.	10	70804-67500
	30/5.33 oz	10	70804-67501
VEAL CHOPETTE, CHARBROILED Boneless, tender and fully cooked chop shape veal. Deliciously seasoned to perfection	160/3 oz.	30	75156-80030



**COMMODITY REPROCESSED - CN
SCHOOL PROGRAMS**



Product Description	Approximate Servings Per Case	Case Weight (lb.)	Code Number
BEEF ITEMS			
2.50 oz. Ground Beef Sandwich Steaks - Ready to Cook 1.75 oz. M/MA	176	27.5	75156-92125
2.75 oz. Ground Beef Sandwich Steaks - Ready to Cook 2.00 oz. M/MA	160	27.5	75156-92127
1 LB. Ground Beef Bricks - Ready to Cook 2.00 M/MA per 2.5 oz. Serving	177	30	75156-91100
3.20 oz. Ground Beef Burgers - Ready to Cook - 2.25 oz. M/MA	140	28	75156-91132
.833 oz. Fully Cooked Beef Meatballs - 2.00 oz. M/MA	192	30	75156-94110
.50 oz. Fully Cooked Beef Meatballs - 2.00 oz. M/MA	192	30	75156-94105
.675 oz. Fully Cooked LS Gluten & Soy Free Beef Meatballs CN 2.00 oz. M/MA	178	30	75156-94675
1.00 oz. Fully Cooked Charbroiled Beef Burger 1.00 oz. M/MA	480	30	75156-93310
2.00 oz. Fully Cooked Beef Patties Charbroiled - 2.00 oz. M/MA	240	30	75156-93320
2.50 oz. Fully Cooked Beef Patties Charbroiled - 2.50 oz. M/MA	192	30	75156-93322
3.00 oz. Fully Cooked Beef Patties Charbroiled - 3.00 oz. M/MA	160	30	75156-93330
2.25 oz. Fully Cooked LS Beef Patties with APP Charbroiled 2.00 oz. M/MA	213	30	75156-93427
3.00 oz. Fully Cooked LS Beef Patties with APP Charbroiled 2.75 oz. M/MA	160	30	75156-93429
1.25 oz. Fully Cooked Little Andy Patties with APP Charbroiled - 1.00 oz. M/MA	384	30	75156-93421
2.60 oz. Fully Cooked Salisbury Steaks - 2.00 oz. M/MA	160	26	75156-93626
2.60 oz. Fully Cooked Meatloaf Slices - 2.00 oz. M/MA	160	26	75156-93726



COMMODITY REPROCESSED - CN SCHOOL PROGRAMS



Product Description	Approximate Servings Per Case	Case Weight (lb.)	Code Number
BEEF ITEMS			
2.50 oz. Fully Cooked BBQ Seasoned Beef Rib Pattie - 2.00 oz. M/MA	192	30	75156-95120
1.20 oz. Fully Cooked Beef Sausage Patties - 1.00 oz. M/MA	400	30	75156-95212
PORK ITEMS			
2.50 oz. Fully Cooked BBQ Pork Rib Patties - 2.00 oz. M/MA	192	30	75156-95320
2.50 oz. Fully Cooked Pork Sausage Patties - 2.00 oz. M/MA	192	30	75156-97125
1.20 oz. Fully Cooked Pork Sausage Link - 2.00 oz. M/MA	208	30	75156-97212
1.20 oz. Fully Cooked Pork Sausage Pattie s- 1.00 oz. M/MA	400	30	75156-97112

*Note: All commodity items have a CN labeled commercial equivalent. Replace the first 9 with a 0 (example 75156-08200) for the commercial item code.



HERB GARLIC BLEND



Product Description	Case Pack	Case Weight (lb.)	Code Number
HERB GARLIC BLEND Blend of natural margarine, garlic, parsley and other spices to use for sautéing, grilling, flavoring and dipping. Perfect enhancement for seafood, beef, poultry, pork, vegetables and bread. Conveniently packaged in 5 Lbs. tubs to use the amount needed, and return the remainder to freezer. Trans Fat Free.	3/5 lb. tubs	15	73119-20035